



Unique mechanism to produce soft fluffy rice

Can produce continuous or single maki rolls

Size selectable, in round or square shape

Adjustable cutting size with rotary cutter



CONTINUOUS Roll Sushi Machine

SVR-SAE-W

Produces 4000 rolls per hour continuously, as if they were hand made!!



Small



Medium



Large



Rice outside



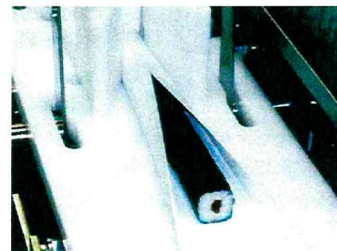
Single roll



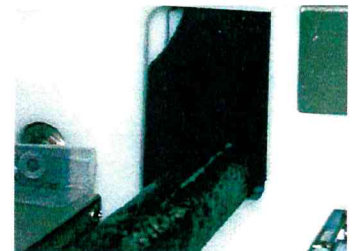
Rice spreading continuously. Rice sheet can be cut by required length.



Roll up from one side then the other side.

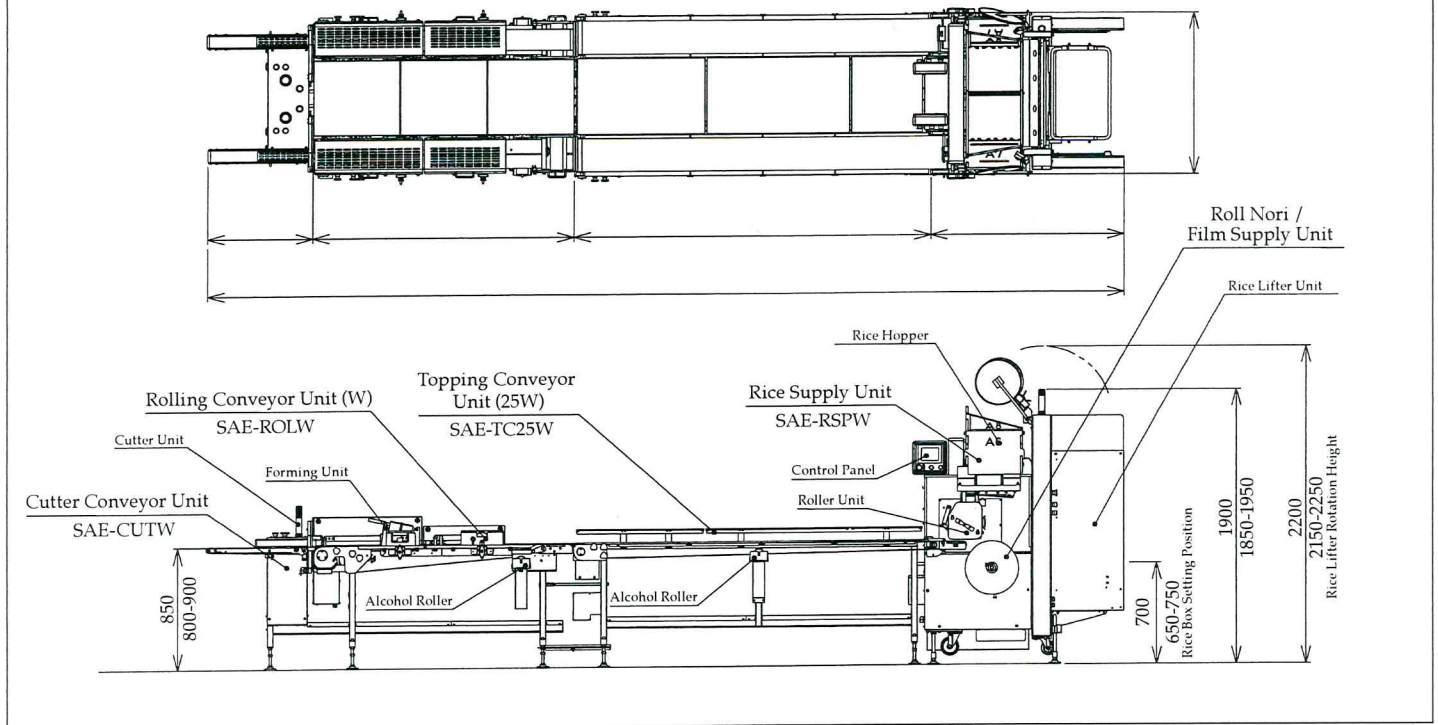


Rolls are formed gently.



Cut length is adjustable. The rotary cutter is always kept clean with alcohol.

Dimensions



Specifications

Power

3-phase, 200V 50/60Hz

Power consumption

1.7kW (excluding optional accessories)

Machine dimensions (in mm)

6360W x 1115D x 1900Hmm (Max. 2250Hm)

Topping Conveyor Unit selectable (2/2.5/3/3.5m)

Capacity

4000 rolls per hour (double lines, roll length at 180mm)

- Speed adjustable
- Single roll selectable

Roll Size (selectable)

Small / 80 x 180mm (rice weight approx. 80g)

Medium / 120 x 180mm (rice weight approx. 140g)

Large / 155 x 180mm (rice weight approx. 235g)

Lifter Capacity

Under 20kgs

Hopper Capacity

15kg

Weight

Under 860kg

Features

- Continuous output of soft, consistent rice sheet.
- Continuous rice sheet or single rice sheet selectable.
- Independent topping conveyor.
- Conveyor length is selectable (2/2.5/3/3.5m)
- Unique forming mechanism, by rolling up from one side, then the other side.
- Roll size and shape can be changed by exchanging forming units.
- Rotary cutter will cut rolls sharply by variable lengths.
- Equipped with an interlock system for operator's safety.
- Each line has its own touch panel controller.
- Maximum capacity 4000 rolls per hour (with 2 lines)
- Designed safe and clean.

* Designs and specifications subject to change without notice.

* Please follow the instruction in the operation manual when handling the machine.

* While capacity expresses the machine's performance capabilities, it is predicated upon the machine being operated correctly.



Suzumo Machinery Co., Ltd.

Overseas Business Division

2-23-2, Toyotamakita, Nerima-ku,

Tokyo 176-0012, Japan

Tel. +81 3-3993-1407 Fax. +81 3-3993-1756

e-mail overseas@suzumo.co.jp

URL <http://www.suzumokikou.com>

< Contact in North America >

Suzumo International Corporation

1815 W. 205th Street, Suite 101

Torrance, CA 90501, U.S.A.

Tel. +1 310-328-0400

Fax. +1 310-328-2700

e-mail sic@suzumokikou.com